

Environment and Sustainability

2024
PROGRAM

EVENTS | ACTIVITIES | OPPORTUNITIES





ACTIONS TO TAKE IN 2024

Whether at home or in the community, there are easy things you can do for a cleaner, greener future in Ipswich.

It's as simple as getting your free plants for your backyard from council's nursery, or joining in one of the community planting events through the year.

There are so many conservation estates and beautiful natural areas for you to enjoy – make 2024 the year you explore as many as you can.



1. Put some plants in the ground



2. Explore Ipswich's natural beauty



5. Share the word!



4. Give your time



3. Send less to landfill

Tell your friends, family, neighbours, work colleagues... everyone! how easy it is to make simple changes for a cleaner, greener future in Ipswich.

Be a part of creating change, whether as a regular environmental volunteer with council, or by attending an environment and sustainability event or workshop.

Whether it's through your household lime green lid FOGO bin, or your yellow lid co-mingled recycling bin, help make 'waste' a resource and save valuable items from going to landfill.

PROGRAM SNAPSHOT

Key events in 2024

Greening your suburb	4
Habitat Connections	5
Waterway activations.....	6
Sustainable Ipswich.....	7

A cleaner and greener future... in the community

Conservation estates.....	8
Enviro volunteers	10
Queens Park.....	11
Bushcare.....	12
Funding and grants.....	13
EnviroEd.....	14

A cleaner and greener future... at home

Landholder Partnerships	15
Free Plant Program	16
Kerbside collection.....	17
Get Ready.....	18
Disaster Dashboard.....	19



SUBSCRIBE TO ENVIRO UPDATES



The monthly Environment Matters e-newsletter sends the latest news about Ipswich's natural environment and sustainability initiatives straight to your inbox.

Subscribe for updates at
ipswich.qld.gov.au/subscribe

Ipswich City Council respectfully acknowledges the Traditional Owners as custodians of the land and waters we share. We pay our respects to their Elders past, present and emerging, as the keepers of the traditions, customs, cultures and stories of proud peoples.

URBAN GREENING



Trees in urban areas bring multiple benefits for people and the environment.

Cooling neighbourhoods, absorbing and filtering pollutants, providing habitat, increasing enjoyment of local areas and more!

Overall, council's target is to increase urban greening plantings, with 90 per cent to reach healthy maturity, and at least 50 per cent to be local native species.

You can read more about actions for our city in the Urban Greening Plan at lpswich.qld.gov.au



GREENING YOUR SUBURB

Council will hold free community planting days in priority suburbs in 2023.

You can help bring the benefits of urban greening to local neighbourhoods.

These events are part of delivering goals in the Urban Greening Plan.

REQUEST A STREET TREE

Support urban greening in your neighbourhood by requesting a footpath tree for your nature strip.

Go to Myjpswich.com and click on Trees/Vegetation



Stay up to date

lpswichcitycouncil.eventbrite.com

Click 'follow' to receive notifications of when new events are added, including the Greening Your Suburb events.

HABITAT CONNECTIONS

Join in free community planting events and help improve our local environment.

Habitat Connections supports projects that regenerate Ipswich's urban waterways.

TREES FOR MUM

Celebrate Mother's Day and plant a tree with, or to honour, that special person in your life.

This event will improve waterway health and create healthy habitat for native species such as platypus.

**The event will be on
Sunday 12 May 2024**

WORLD RIVERS DAY HABITAT PLANTING

Join in riverbank stabilisation and restoration on the Bremer River.

These plantings will help create habitat for wildlife including the vulnerable lungfish.

**The event will be on
Sunday 29 September 2024**



Register online

ipswichcitycouncil.eventbrite.com

Click 'follow' to be notified of community planting events.

WATERWAYS IN FOCUS



From our catchments to our creeks, the whole family can participate in events celebrating Ipswich's waterways.

WATERFEST

From March to April 2024 there will be plenty to enjoy along the Bremer and Brisbane Rivers:

- Catch, snap and release fishing competition
- Learn to fish sessions
- Nature play at a local creek

See the full program

ipswich.qld.gov.au/waterfest

PEAKS TO POINTS FESTIVAL

This celebration of council and community efforts to care for creek catchments along the southern side of the Brisbane River is only held every two years.

Ipswich City Council is proud to support Peaks to Points Festival, and contribute activities to the exciting program, with lots happening between 20 July to 4 August 2024.

- Family Day at Oxley Creek Common
- Enviro talks at Queens Park Environmental Education Centre
- National Tree Day community planting event



See the full program

Peakstopoints.com.au

Find program details and register for a huge range of free and low-cost events.

SUSTAINABLE IPSWICH

During October celebrate community action to increase our city's sustainability.

By sharing stories, knowledge and ideas we can live, eat and play the sustainable way!

A range of activities will encourage grassroots action to make Ipswich a more liveable city.

HIGHLIGHT 1: OPEN GARDENS

Be inspired by touring local habitat backyards.



HIGHLIGHT 2: SUSTAINABLE LIVING FESTIVAL

Tulmur Place will be a hive of activities and ideas.



HIGHLIGHT 3: WORKSHOPS AND FORUMS

Lifelong learning opportunities for all ages.



See the full program

ipswich.qld.gov.au/sustainability

There will be so much happening across October to celebrate Sustainable Ipswich! Find details and register for a range of free and low-cost events and activities.

CONSERVATION ESTATES

Ipswich has several conservation estates and reserves you can explore. These are funded through council's Ipswich Enviroplan initiative.

WHITE ROCK - SPRING MOUNTAIN CONSERVATION ESTATE

A popular estate for nature-based recreation. Includes the iconic White Rock which has cultural significance to the Traditional Owners.

FLINDERS - GOOLMAN CONSERVATION ESTATE

Home to Ipswich's faunal emblem, the Brush-tailed Rock Wallaby. Also offers bush camping and Ipswich's most challenging hike.

PURGA NATURE RESERVE

Contains the largest protected area of endangered Swamp Tea-tree forest.

DENMARK HILL CONSERVATION RESERVE

Restored urban bushland with remnants of a mining history.



DID YOU KNOW?

Ipswich has 12 conservation estates and reserves that cover more than 6,700ha.

Over 25 years about \$12 million has been invested through Ipswich Enviroplan to purchase land for nature conservation.

HAIG STREET QUARRY CONSERVATION RESERVE

A bird-watching hotspot with family friendly bushwalks. This rehabilitated quarry site offers scenic views from lookouts, and facilities such as playground and barbecues.

HILLVIEW DRIVE RESERVE

Popular for mountain biking and bushwalking

RIC NATRASS ENVIRONMENTAL PARK

On Woogaroo Creek, it connects other conservation areas.



EXPERIENCE NATURE

Guided tours reveal stories, history and the fascinating flora and fauna in our conservation estates.

Special experiences are offered such as sunset hikes to watch the full moon rise.

Tour bookings are available via Ipswich Visitor Information centre, see Discoveripswich.com.au

ENVIRO VOLUNTEERS

There is something for everyone when it comes to environmental volunteering with council.

When you volunteer with council you support creating a healthier natural environment – whether through hands-on activities or education and awareness.

Opportunities include:

- sharing ideas with visitors at the Queens Park Environmental Education Centre
- planting and maintenance at Bushcare sites across the city
- feeding, cleaning and other animal care work at the Ipswich Nature Centre
- assisting environment-related events



THE ONLY THING MISSING IS **YOU**

Register your interest now – ipswich.qld.gov.au/volunteering

Find volunteering opportunities and register through the Volunteer Portal.

QUEENS PARK

This popular destination offers a variety of environment-related features and activities.

The historic Queens Park in the centre of Ipswich has plenty of attractions for a full day out, including café, gardens, plant nursery, playgrounds and more.



IPSWICH NATURE CENTRE

With more than 42 species – including dingoes, wallabies, bilbies and more – the Ipswich Nature Centre is a wonderful opportunity to get up close with native wildlife.

Open Tuesday to Friday
9.30 am to 4.00 pm

Free entry (gold coin donation appreciated).



ENVIRONMENTAL EDUCATION CENTRE

In the heart of Queens Park is an education centre with environmental information and activities for all ages.

Open Tuesday to Saturday
9.00 am – 2.00 pm

School holidays open
Monday to Saturday
9.00 am – 2.00 pm

Free entry



BUSHCARE

Get hands-on with like-minded volunteers on a mission to improve our natural environment.

It's easy to become a Bushcare volunteer:

- no skills or knowledge needed; everything can be learned 'on the job'
- meet new people with similar interests and a shared goal
- do up to three trial days to see if it's for you
- do a short induction to become a regular volunteer – and get a free hat and gloves
- see the rewards of your hard work as you transform weeds into native habitat.

Sign up for a trial

ipswich.qld.gov.au/volunteering

Ipswich's Bushcare groups have regular working bees that you can join for a trial. Find information and register through the Volunteer Portal.



FIND A GROUP NEAR YOU!

- Garden of Eden Project, Cribb Park, North Ipswich
- Mason's Gully Regenerative Project, Rosewood
- Peace Park Arboretum, Rosewood
- Jim Donald Wetlands, Silkstone
- Woogaroo Creek, Eugene Street Reserve, Bellbird Park
- Opossum Creek Regenerative Project, Brookwater
- Denmark Hill Conservation Reserve, Ipswich
- Lorikeet Reserve, Bundamba
- Friends of the Wetlands, Tivoli



FUNDING AND GRANTS

Not-for-profit organisations, schools and wildlife carers can apply for funding to assist their environmental projects.

Under the Enviroplan Levy Community Funding applications can be made for up to \$3,000 for projects that:

- increase community understanding of the values of the natural environment and local environmental issues and impacts
- increase community action that benefits the natural environment
- improve the condition of bushland or the conservation of native flora and fauna on private or public land.

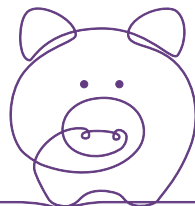
Examples of initiatives include:

- conservation projects, programs and events
- improvements to native habitat, waterways and parks
- fauna and flora protection and conservation
- tree planting
- community environmental education and awareness.

APPLY ONLINE

ipswich.qld.gov.au/funding

Application rounds occur in March and September each year.



ENVIROED

This program of child-focused activities is designed to educate and empower our next generation of environmental stewards.

Enviroed includes events, training, resources and excursions specifically to support schools and families with environmental education.

SCHOOL HOLIDAY ACTIVITIES

Families can join in the fun on school holidays with an ever-changing program of free activities.

This free program may be offered at the Queens Park Environmental Education Centre and/or an outdoor location.

TEACHER PROFESSIONAL DEVELOPMENT

This supports educators with practical information on environmental topics and projects they can implement in their school or centre.

Sessions are held approximately once a term at the Queens Park Environmental Education Centre, or outdoor/onsite locations.

EXCURSIONS

School groups can organise excursions to Queens Park and can be provided with a recommended program for visiting the Nature Centre and Environmental Education Centre.

Nature excursions to conservation areas can also be booked by schools and early learning centres, with several age-appropriate locations available.



Find out more

ipswich.qld.gov.au/enviroed

Discover information on activities and resources for students, schools, teachers and families.



LANDHOLDER PARTNERSHIPS

There are ways council can help private landholders achieve their conservation goals.

A range of free partnerships are available through the Enviroplan-funded Landholder Conservation Partnerships Program (LCPP).

These partnerships encourage and assist Ipswich landholders to manage, enhance and protect ecosystems in order to conserve flora and fauna on their properties.

The program offers a range of support including free plants, resources, workshops and grant opportunities.



HABITAT GARDENS

This is an urban partnership designed to help people with smaller blocks make a positive contribution to Ipswich's environmental outcomes.

BIODIVERSITY CONSERVATION AGREEMENT

This partnership is designed to help protect and manage larger areas of important intact vegetation.

CORRIDOR CONSERVATION AGREEMENT

Under this partnership, landholders can be supported in restoring fragmented landscapes or waterway corridors.

LAND FOR WILDLIFE

This established program supports landholders committed to conserving the environment.

VOLUNTARY CONSERVATION COVENANT

A permanent protection mechanism through the Land Titles Act that protects the ecological values of a property.

Join a partnership

ipswich.qld.gov.au/lcpp

Find more information on requirements and benefits of a partnership that suits your environmental goals.

FREE PLANT PROGRAM

Ipswich residents are entitled to free plants every financial year.

The plants are grown in council's production nursery and chosen to suit Ipswich's climate and conditions.

Your free plants are available from council's Queens Park Nursery, which is open limited hours, or the mobile nursery.

Generally, residents will be able to claim six free plants each financial year!

When you collect your plants you will need to present documentation, such as a current rates notice.

Ipswich residents are also able to purchase plants from the Queens Park Nursery (EFTPOS only).

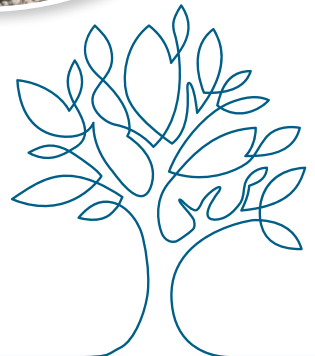


Pick up your free plants

ipswich.qld.gov.au/freeplants

Find full details online, including

- documentation requirements
- nursery opening hours
- mobile nursery dates and locations
- planting and gardening tips.



KERBSIDE COLLECTION

Being cleaner and greener at home is as simple as sorting your waste before putting it on the kerbside!

LARGE ITEM KERBSIDE COLLECTION

From early 2024 Ipswich residents will have greater access and more flexibility to dispose of unwanted household items with the introduction of an annual on-demand service.

- Each household will be eligible for one free collection per year
- Households can order a 2 cubic metre bag when it's convenient.

Under the new on-demand model, a minimum of 50 per cent of materials are expected to be recovered from landfill, with the bagged collection meaning less chance of debris and litter on the kerbside.

See ipswich.qld.gov.au/kerbside



CO-MINGED RECYCLING KERBSIDE COLLECTION

Remember to 'Recycle 5' in your yellow lid recycling bin:

- **Glass** jars and bottles
- **Metal** such as aluminium and steel (drink and aerosol cans, food tins)
- **Plastic** bottles and containers (milk, soft drink and shampoo bottles, yoghurt/ice cream tubs)
- **Cardboard** boxes (including pizza boxes)
- **Paper** (newspapers, magazines, junk mail and office paper)

See ipswich.qld.gov.au/recycling



FOOD ORGANICS GARDEN ORGANICS KERBSIDE COLLECTION

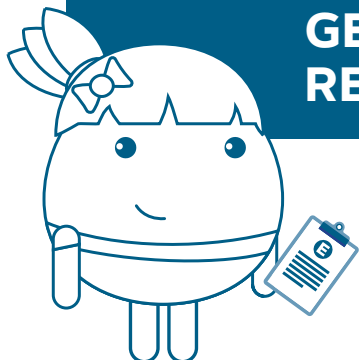
Use your lime green lid FOGO bin for waste such as grass clippings, prunings, leaves, fruits and vegetables, and meat and dairy leftovers.

This organic waste is turned into nutrient-rich compost which can be used in green spaces in Ipswich.

See ipswich.qld.gov.au/fogo



GET READY



This year-round program helps all Queenslanders prepare for natural disasters.

There are simple things your household can do today to Get Ready.

HAVE AN EMERGENCY PLAN

Preparing now will save you time and stress in the event of a disaster.

Consider questions such as – do I stay or leave? Where can I find shelter? How will I care for pets? What if I cannot come home?

PREPARE AN EMERGENCY KIT

This kit should have everything your family needs to shelter at home for three days. If you already have an emergency kit, make time each year to check expiry dates and refresh it.

SHARE YOUR 'WHAT IF' PLAN

Have the conversation with those around you and get the kids involved with fun videos and activities. Help your friends, family and neighbours get ready too – let's look out for each other.



Get Ready today

ipswich.qld.gov.au/emergency

Understand your local risk in Ipswich and find resources from checklists to translated resources.



DISASTER DASHBOARD

Stay up to date with the latest local information during a disaster or emergency.

It's free and easy – and works on a computer, tablet or smartphone.

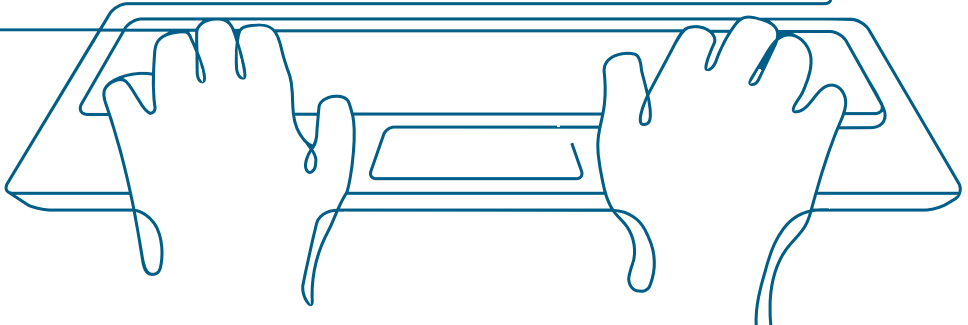
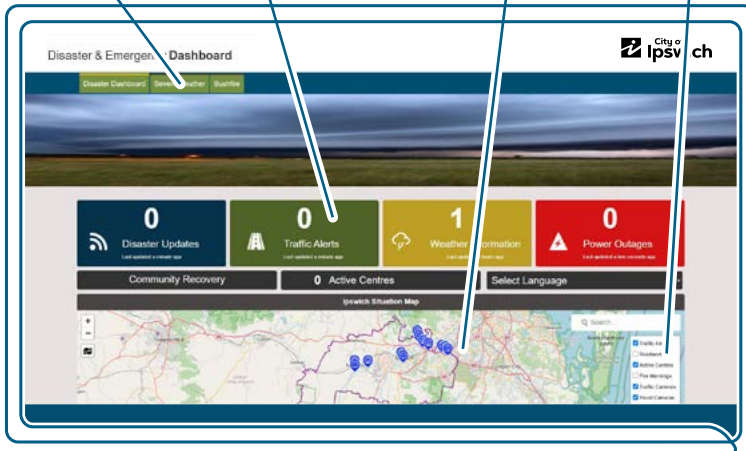
Simply go to Disaster.ipswich.qld.gov.au

Check warnings for weather and fire conditions.

Find live feeds direct from the source, including BoM, Energen, QLD Traffic, QFES and more in one handy location.

See the local information you need on an interactive map.

Choose the real-time information you want including flood camera feeds.



 **IPSWICH
ENVIROPLAN**

Ipswich City Council
PO Box 191, Ipswich QLD 4305, Australia

Phone (07) 3810 6666
council@ipswich.qld.gov.au
ipswich.qld.gov.au

Join us online:



/ipswichCityCouncil



/ipswich-city-council



/ipswichCityCouncilTV

*Recycle me
when you're done!*

Put me in your yellow lid recycling bin
or rip me up and put me in your compost.

